



# INDOFINE Chemical Company, Inc.

121 Stryker Lane, Bldg. 30, Suite 1 • Hillsborough, NJ 08844 • U.S.A.

Phone: (908) 359-6778 • FAX: (908) 359-1179

website: [www.indofinechemical.com](http://www.indofinechemical.com)

e-mail: [chemical@indofinechemical.com](mailto:chemical@indofinechemical.com)

## CERTIFICATE OF ANALYSIS

Cat No.: M-016

Product: 7-METHOXYFLAVONE

Cas Number: [22395-22-8]

Lot Number: 1004026

Chemical Formula: C<sub>16</sub>H<sub>12</sub>O<sub>3</sub>

Molecular Weight: 252.27

Melting Point: 110-112°C

Solubility: Soluble in 1% acetone

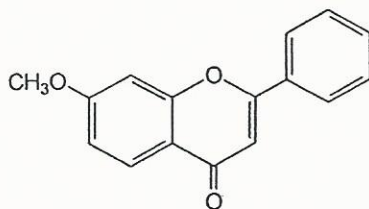
Appearance: White powder

Storage: Cool dry place

TLC: Hexane:Ethylacetate (8:2) single compound

Moisture (KF): 0.20%

Assay (HPLC): 99.56%





# INDOFINE Chemical Company, Inc.

121 Stryker Lane, Bldg. 30, Suite 1 • Hillsborough, NJ 08844 • U.S.A.

Phone: (908) 359-6778 • FAX: (908) 359-1179

website: [www.indofinechemical.com](http://www.indofinechemical.com)

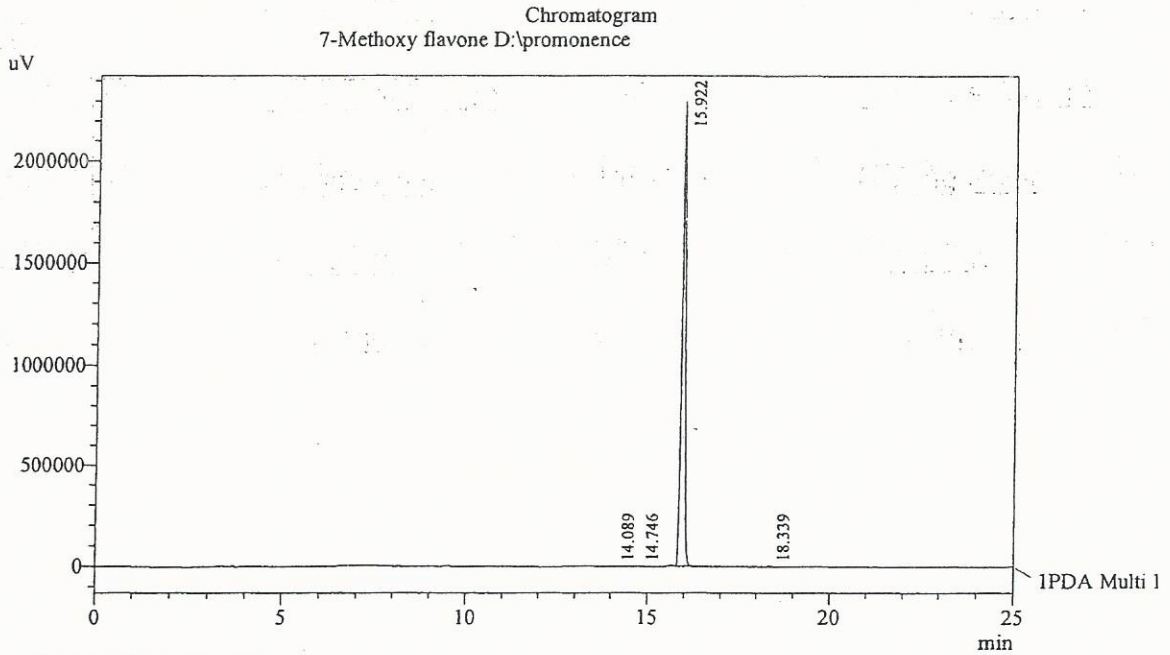
e-mail: [chemical@indofinechemical.com](mailto:chemical@indofinechemical.com)

## HPLC ANALYSIS

Acquired by : Madhuri  
Sample Name : 7-Methoxy flavone  
Sample ID : Uniform Sample- 38 kg lot  
Injection Volume : 20 uL  
Data Filename : 120410B.lcd  
Method Filename : Linear Gradient.M.lcm

Cat. No.: M-016  
Product: 7-Methoxyflavone  
Lot No.: 1004026

Description:  
Column : Inertsil C-18, 250X4.6mm 5.0µm  
Flow : 1.000mL/min.  
Mobile Phase : A(Water 0.05% TFA) : B( ACN)  
00.01 : 90 : 10  
12.00 : 10 : 90  
20.00 : 10 : 90  
23.00 : 90 : 10



1 PDA Multi 1 / 240nm 4nm

PeakTable

PDA Ch1 240nm 4nm

Peak#	Ret. Time	Area	Height	Area %
1	14.089	20835	1403	0.138
2	14.746	22223	2130	0.147
3	15.922	15014079	2297164	99.569
4	18.339	21989	2126	0.146
Total		15079127	2302822	100.000